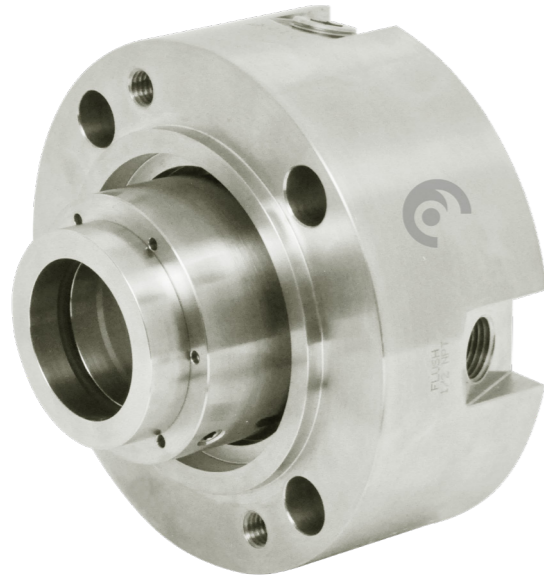


LSC10B-FQ

SECTORS:



CHARACTERISTICS:

- Balanced.
- Multispring.
- Not dependent on the rotation direction.
- Flush and drain connections.
- API 682 / ISO 21049.
- Categories 2 and 3, Type A, Arrangement 1.

OPERATION LIMITS:

$$d_1 = 19,05 \div 110 \text{ mm} \quad p = 40 \text{ kg/cm}^2$$

$$v = 23 \text{ m/s} \quad t = -40 \div +220^\circ\text{C} (*)$$

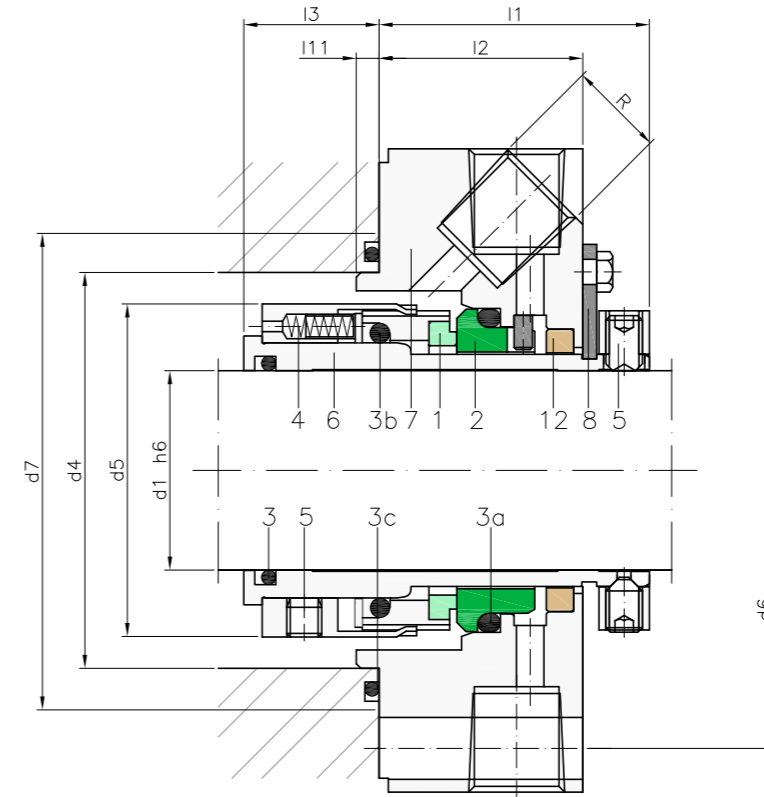
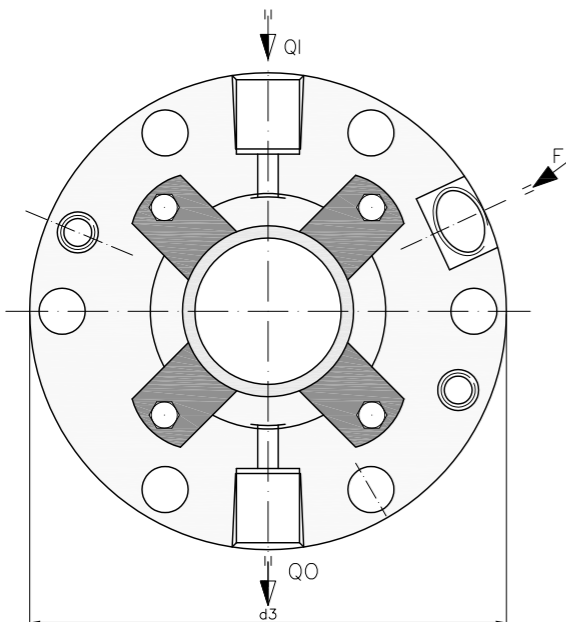
(*) The temperature resistance depends on the material of the secondary seals used.

The operating limits are defined by the PV factor which is determined for the sealing system characteristics and those of the application.

DESCRIPTION:

Simple cartridge with connections for washing between the friction faces and the Quench system with unpressurized fluid for cooling. For applications where high pressure is required.

The special characteristics of the cartridge provide great robustness and reliability. Its design allows axial movement of up to ± 2.0 mm, depending on the diameter and mounting.



COMPONENTS:

- 1 Rotating contact surface
- 2 Stationary contact surface
- 3 O-ring
- 4 Springs
- 5 Drive ring
- 6 Sleeve
- 7 Flange
- 8 Setting clips
- 12 PTFE ring for quench.

DIMENSIONS CHART

Dimensions in mm

Shaft										
mm	d ₃	d ₄	d ₅	d ₆	d ₇	l ₁	l ₂	l ₃	l ₁₁	
20	138,0	70,0	50,0	105,0	85,0	94,0	76,0	1,0	6,0	
30	148,0	80,0	62,0	115,0	95,0	98,0	77,0	2,5	6,0	
40	158,0	90,0	72,0	125,0	105,0	98,5	77,5	7,0	6,0	
50	168,0	100,0	86,0	140,0	115,0	99,5	78,5	12,0	6,0	
60	188,0	120,0	99,0	160,0	135,0	102,0	81,0	18,5	6,0	
70	198,0	130,0	109,0	170,0	145,0	106,0	81,0	18,0	6,0	
80	208,0	140,0	119,0	180,0	155,0	106,0	81,0	23,0	6,0	
90	238,0	160,0	129,0	205,0	175,0	106,0	81,0	23,0	6,0	
100	248,0	170,0	153,0	215,0	185,0	109,0	81,0	24,0	6,0	
110	258,0	180,0	168,0	225,0	195,0	109,0	81,0	24,0	6,0	

Dimensions in inches

Shaft										
(")	mm	d ₃	d ₄	d ₅	d ₆	d ₇	l ₁	l ₂	l ₃	l ₁₁
0,750	19,05	138,0	70,0	50,0	105,0	85,0	94,0	76,0	1,0	6,0
1,125	28,575	148,0	80,0	62,0	115,0	95,0	98,0	77,0	2,5	6,0
1,500	38,10	158,0	90,0	72,0	125,0	105,0	98,5	77,5	7,0	6,0
2,000	50,80	168,0	100,0	86,0	140,0	115,0	99,5	78,5	12,0	6,0
2,250	57,15	188,0	120,0	99,0	160,0	135,0	102,0	81,0	18,5	6,0
2,750	69,85	198,0	130,0	109,0	170,0	145,0	106,0	81,0	18,0	6,0
3,125	79,38	208,0	140,0	119,0	180,0	155,0	106,0	81,0	23,0	6,0
3,500	88,90	238,0	160,0	129,0	205,0	175,0	106,0	81,0	23,0	6,0
3,750	95,25	248,0	170,0	153,0	215,0	185,0	109,0	81,0	24,0	6,0
4,250	107,95	258,0	180,0	168,0	225,0	195,0	109,0	81,0	24,0	6,0

Dimensions subject to changes or modifications.